

ABOUT US

Fabrizio Carlotto, founded in 1961 by the homonym founder, is today, thanks to the experience and passion of his two sons Tiziano and Claudio, an important point of reference in Europe in the hot forged steel sector.



OUR MACHINES

Fabrizio Carlotto has 5 different lines of production:

- N° 2 1600 Ton presses
- N° 1 2500 Ton press, highly robotized
- N° 1 4000 Ton press, highly robotized
- N° 1 6300 Ton press, highly robotized



We also have one area completely dedicated to the construction of the the dies and to machine the pieces, composed by CNC machines from 3 to 5 axes and lathes.

WHAT WE DO

We are specialized in hot forging of carbon, alloyed, stainless steel, duplex, super duplex and special alloys. On customer's request we are also able to deliver finished items.

SECTORS OF APPLICATION:

- AGRICULTURAL AND FORESTRY
- AUTOMOTIVE
- OIL AND GAS
- ROAD CONSTRUCTION
- LIFTING
- OTHERS

RANGE OF PRODUCTION FROM 0.5 KG UP TO 120 KG
COMPANY'S TOTAL AREA: 25000 SQM

QUALITY AND CERTIFICATIONS

The quality of our products is ensured by a control unit that carries out systematic surveys both in the first and in the final phases of the production process, using specific equipment such as durometer, spectrotest and magnaflux.

WE HAVE THE FOLLOWING CERTIFICATIONS:

- ISO 9001:2015
- AD 2000 Merkblatt W0
- LLOYD'S Register

WE ARE ABLE TO DELIVER WITH:

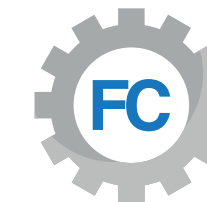
- Ultrasonic test
- Certificate 3.1
- Certificate 3.2



Fabrizio Carlotto
Forged steel

CONTACTS

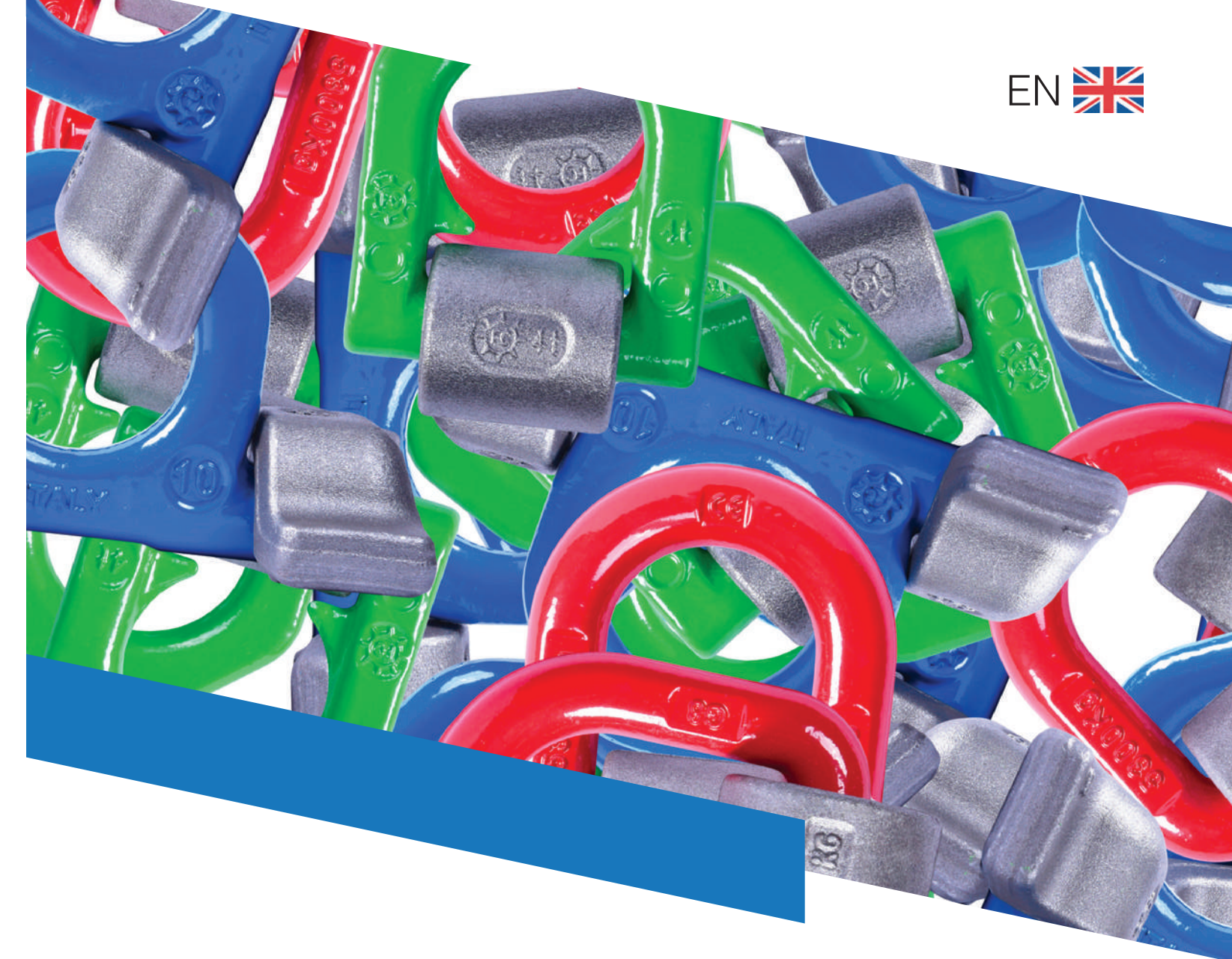
Tel. +39 0332-461744 | info@fabriziocarlotto.com
Via Campo di Maggio 23 21020 - Brunello (VA) ITALY
Cod. Fisc. - P.IVA: IT02130510122

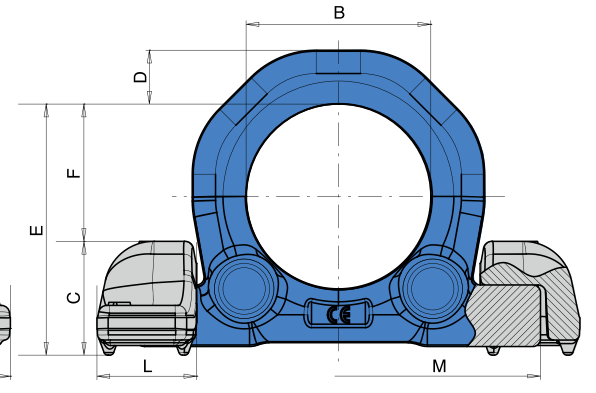
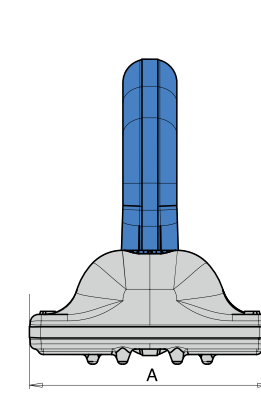
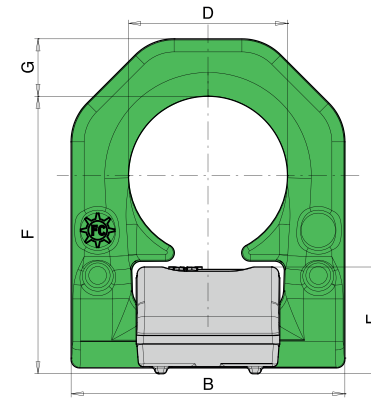
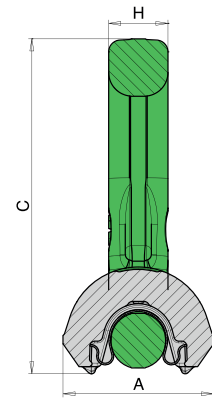
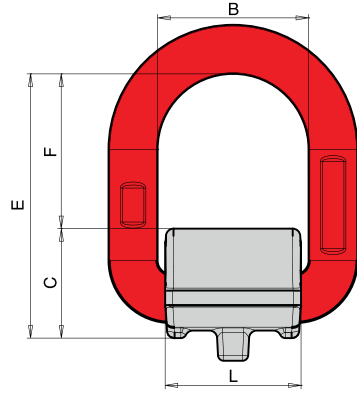
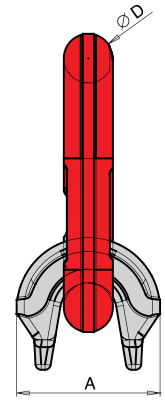


Fabrizio Carlotto
Forged steel

**WELDABLE
LIFTING POINTS**

EN





LASTBOCK GRADE 8

Working load from 1.5 ton to 37.5 ton, available with or without spring which holds the ring in the desired position. Made in tempered steel alloy, very high resistance. In accordance with EC Directive safety factor 4. 100% Magnaflux tested Available neutral or in different colors.

Weight (Kg)	E (mm)	D (mm)	F (mm)	B (mm)	C (mm)	A (mm)	L (mm)
1120	70	13	41	40	29	38	34.5
2000	78	14	48	42	30	40	36
3150	84	17	48	45	36	42	40.7
5300	103	22	57	55	46	60	48.5
8000	120	26	66	70	54	70	63.5
15000	163	34	94	97	69	90	90
20000	163	34	94	97	69	90	90
37.500	275	52	175	170	100	135	140

Maximum load weight "G" in different mounting options for Lastbocks of grade 8

Kind of attachment	G		G		G		G		G
	0°	90°	0°	90°	0°- 45°	45°- 60°	0°- 45°	45°- 60°	
Number of pieces	1	1	2	2	2 Symmetrical		3, 4 Symmetrical		2, 3, 4
Angle	0°	90°	0°	90°	0°- 45°	45°- 60°	0°- 45°	45°- 60°	Unsymmetrical
Working load limit t.	1,12	1,12	2,24	2,24	1,50	1,12	2,36	1,60	1,12
Working load limit t.	2,00	2,00	4,00	4,00	2,80	2,00	4,00	3,00	2,00
Working load limit t.	3,15	3,15	6,30	6,30	4,25	3,15	6,30	4,75	3,15
Working load limit t.	5,30	5,30	10,60	10,60	7,10	5,30	11,20	8,00	5,30
Working load limit t.	8,00	8,00	16,00	16,00	11,20	8,00	16,00	12,00	8,00
Working load limit t.	15,00	15,00	30,00	30,00	21,20	15,00	31,50	22,40	15,00
Working load limit t.	20,00	20,00	40,00	40,00	27,00	20,00	40,00	30,00	20,00
Working load limit t.	30,00	30,00	60,00	60,00	40,50	30,00	60,00	45,00	30,00
Working load limit t.	37,50	37,50	75,00	75,00	52,00	37,50	75,00	56,00	37,50

LASTBOCK GRADE 10

Working load from 1.5 ton to 16 ton, available with or without spring which holds the ring in the desired position. Made in tempered steel alloy, very high resistance. In accordance with EC Directive safety factor 4. 100% Magnaflux tested Available neutral or in different colors.

Weight (Kg)	A (mm)	B (mm)	C (mm)	D (mm)	E (mm)	F (mm)	G (mm)	H (mm)
1500	32	66	78	38	24	64	14	15
2500	36	77	89	45	27	73	16	15
4000	43	87	102	51	32	84	18	19
6700	64	115	141	67	45	117	24	25
10000	76	128	152	67	52	125	27	28.5
16000	94	192	215	100	68	174	41	27

Maximum load weight "G" in different mounting options for Lastbocks of grade 10

Kind of attachment	G		G		G		G		G
	0°	90°	0°	90°	0°- 45°	45°- 60°	0°- 45°	45°- 60°	
Number of pieces	1	1	2	2	2 Symmetrical		3, 4 Symmetrical		2, 3, 4
Angle	0°	90°	0°	90°	0°- 45°	45°- 60°	0°- 45°	45°- 60°	Unsymmetrical
Working load limit t.	1,50	1,50	3,00	3,00	2,10	1,50	3,15	2,25	1,50
Working load limit t.	2,50	2,50	5,00	5,00	3,50	2,50	5,25	3,75	2,50
Working load limit t.	4,00	4,00	8,00	8,00	5,60	4,00	8,40	6,00	4,00
Working load limit t.	6,70	6,70	13,40	13,40	9,50	6,70	14,00	10,10	6,70
Working load limit t.	10,00	10,00	20,00	20,00	14,00	10,00	21,00	15,00	10,00
Working load limit t.	16,00	16,00	32,00	32,00	22,40	16,00	33,60	24,00	16,00

RINGBOCK GRADE 10

Working load from 4 ton to 16 ton, weld-on lifting ring with 2 points for an optimal distribution of the forces. Made in tempered steel alloy, very high resistance. In accordance with EC Directive safety factor 4. 100% Magnaflux tested Available neutral or in different colors.

Weight (Kg)	E (mm)	D (mm)	F (mm)	B (mm)	C (mm)	A (mm)	L (mm)	M (mm)
4000	65	14	36	48	30	63	26	105
6700	84	20	44	60	40	88	37	138
10000	92.25	22	46.25	64	46	100.3	46.7	153
16000	123.35	30	66.35	90	57	131	57	205

Maximum load weight "G" in different mounting options for Ringbocks of grade 10

Kind of attachment	G		G		G		G		G
	0°	90°	0°	90°	0°- 45°	45°- 60°	0°- 45°	45°- 60°	
Number of pieces	1	1	2	2	2 Symmetrical		3, 4 Symmetrical		2, 3, 4
Angle	0°	90°	0°	90°	0°- 45°	45°- 60°	0°- 45°	45°- 60°	Unsymmetrical
Working load limit t.	4,00	4,00	8,00	8,00	5,60	4,00	8,40	6,00	4,00
Working load limit t.	6,70	6,70	13,40	13,40	9,50	6,70	14,00	10,10	6,70
Working load limit t.	10,00	10,00	20,00	20,00	14,00	10,00	21,00	15,00	10,00
Working load limit t.	16,00	16,00	32,00	32,00	22,40	16,00	33,60	24,00	16,00